



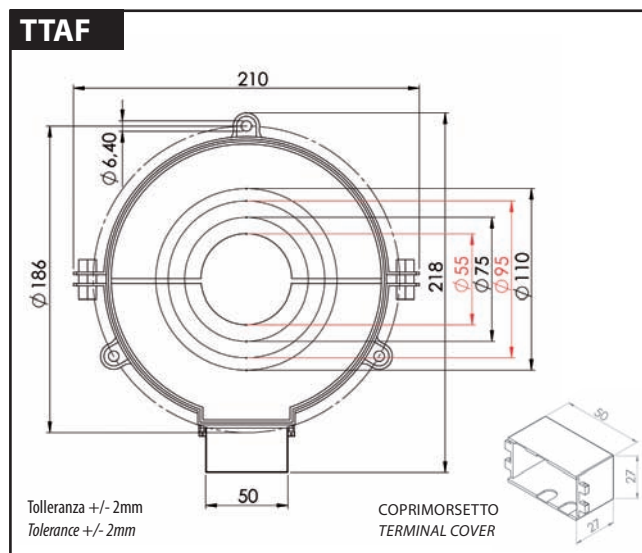
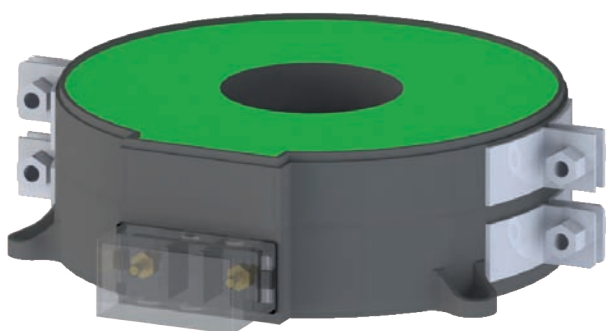
TRASFORMATORI DI CORRENTE APRIBILI / *CURRENT TRANSFORMERS SPLIT CORE*


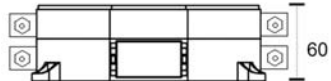
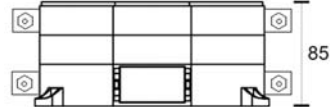
PER PROTEZIONE O MISURA
FOR PROTECTION OR MEASUREMENT

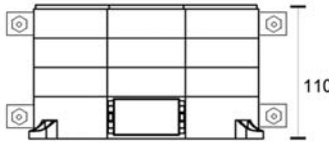
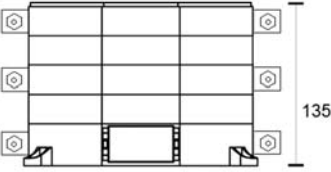
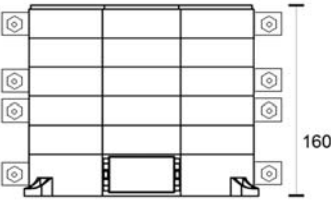
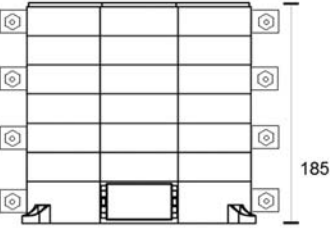
**SERIE TT55AF - TT75AF - 7795AF - TT110AF
*TT55AF - TT75AF - 7795AF - TT110AF SERIES***

Nucleo inglobato in calotta termoplastica grado di autoestinguenza V0 ed annegato in resina. Coprimorsetto sigillabile sul secondario
Embedded core in thermoplastic shell V0 flammability encapsulated in resin. Sealable secondary terminal cover

CARATTERISTICHE GENERALI <i>GENERAL CHARACTERISTICS</i>		CARATTERISTICHE GENERALI <i>GENERAL CHARACTERISTICS</i>	
Corrente termica nominale <i>Rated thermal current</i>	120% In	Frequenza d'impiego <i>Power Frequency</i>	50.....60Hz
Corrente termica nom. di corto circuito (Ith) <i>Short circuit thermal current (Ith)</i>	16kA/1 sec (valori superiori su richiesta) <i>(Higher values on request)</i>	Grado di protezione terminali <i>Degree of protection terminals</i>	IP20
Corrente dinamica nominale <i>Dynamic nominal current</i>	2,5 Ith kA per 1 pk	Classe di isolamento (EN60085) <i>Insulation class (EN60085)</i>	E / B
Tensione di prova <i>Test voltage</i>	3kV a 50Hz / 1 min	Costruito secondo le norme <i>Built according to the standards</i>	CEI EN61869-1 CEI EN61869-2
Tensione di riferimento per l'isolamento <i>Insulating Voltage</i>	0,72kV (su richiesta 1,2kV) <i>(on request 1,2kV)</i>	Temperatura di funzionamento <i>Operating temperature</i>	-5...+40°C
Le caratteristiche generali sono modificabili su richiesta del cliente. <i>The general features can be modified at the customer's request.</i>			



1 SECONDARIO 1 SECONDARY CLAMP			
TT55AF	TT5535AF	TT5560AF	TT5585AF
TT75AF	TT7535AF	TT7560AF	TT7585AF
TT95AF	TT9535AF	TT9560AF	TT9585AF
TT110AF	TT11035AF	TT11060AF	TT11085AF

			
TT55110AF	TT55135AF	TT55160AF	TT55185AF
TT75110AF	TT75135AF	TT75160AF	TT75185AF
TT95110AF	TT95135AF	TT95160AF	TT95185AF
TT110110AF	TT110135AF	TT110160AF	TT110185AF

**DETTAGLIO DI COLLEGAMENTO AL SECONDARIO
DETAIL OF CONNECTION TO THE SECONDARY**



REG

Il posizionamento del morsetto secondario rispecchia le specifiche descritte e mostrate nel catalogo. Posizionamenti differenti andranno specificati e definiti in fase di ordine.
The position of the secondary clamp is according to the specification in the catalogue. Different position may be requested and defined at order stage.