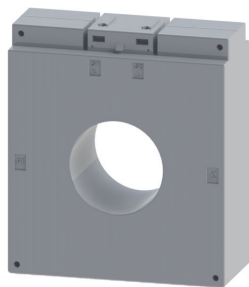
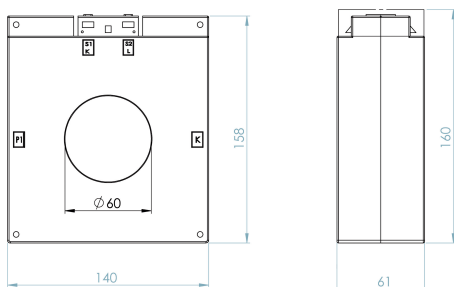


TBN60F

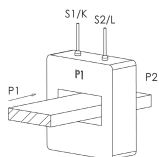


DIMENSIONI / DIMENSIONS

TBN60F



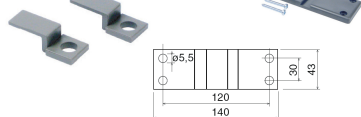
SCHEMA DI COLLEGAMENTO / WIRING DIAGRAM



ACCESSORI INCLUSI / SUPPLIED ACCESSORY

TBN22F

TBN60F



ACCESSORI OPZIONALE / OPTIONAL ACCESSORY



CODICE ART. / ART. CODE 00000003001

CARATTERISTICHE GENERALI / GENERAL CHARACTERISTICS		TBN22F	TBN60F
TIPO / TYPE	TRASFORMATORE A SECCO CON ISOLAMENTO IN ARIA DRY TRANSFORMER WITH AIR INSULATION		
NORME DI RIFERIMENTO / STANDARDS REFERENCE	EN/IEC 61869-1, 61869-2		
FREQUENZA DI FUNZIONAMENTO / OPERATING FREQUENCY	50...60Hz (400Hz SU RICHIESTA / ON REQUEST)		
CORRENTE TERMICA NOMINALE PERMANENTE (I _{ct}) RATED CONTINUOUS THERMAL CURRENT (I _{ct})	100%I _{pr}		
CORRENTE TERMICA NOMINALE DI CORTOCIRCUITO (I _{th}) RATED THERMAL SHORT CIRCUIT (I _{th})	<60I _{pr}	100kA	
CORRENTE DINAMICA NOMINALE (I _{dyn}) RATED DYNAMIC CURRENT (I _{dyn})	2,5x I _{th}	250kA	
FATTORE DI SICUREZZA (FS) / SAFETY FACTOR (FS)	≤ 10		
TENSIONE MASSIMA DI ESERCIZIO (U _m) MAXIMUM OPERATING VOLTAGE (U _m)	0,72KV (1,2 KV A RICHIESTA / ON REQUEST)		
TENSIONE DI PROVA / TEST VOLTAGE	3KV (6 KV A RICHIESTA / ON REQUEST)		
MASSIMA POTENZA DISSIPATA MAXIMUM POWER DISSIPATION (RANGE VALUE)	≤ 6,5W	≤ 19W	
TEMPERATURA MASSIMA AMMISSIBILE SU CAVO O BARRA MAXIMUM ALLOWABLE TEMPERATURE ON F THE CABLE OR BAR	120°C		
ISOLAMENTO / INSULATION	B		
TEMPERATURA DI UTILIZZO / OPERATING TEMPERATURE	-25°C ...+50°C		
TEMPERATURA DI STOCCAGGIO / STORAGE TEMPERATURE	-40°C ...+90°C		
UMIDITÀ RELATIVA / RELATIVE HUMIDITY	≤ 85%		
CUSTODIA IN MATERIALE TERMOPLASTICO AUTOESTINGUENTE SELF EXTINGUISHING THERMOPLASTIC MATERIAL	UL94-V0		
PESO / WEIGHT	≤ 1 Kg	≤ 1 Kg	
GRADO DI PROTEZIONE / PROTECTION DEGREE	IP40 CUSTODIA / HOUSING IP20 TERMINALI / TERMINALS		
TERMINALI SECONDARI / SECONDARY TERMINALS	4mm ²	4mm ²	
TIPO DI FISSAGGIO FIXING TYPE	GUIDA DIN 35mm / DIN RAIL 35mm		
	A VITE PER PANNELLO / SCREWS TYPE FOR PANEL		
	VITE SU SBARRA / FIXING ON BAR WITH SCREW		
SU RICHIESTA ON REQUEST	VERSIONE CON NUCLEO ANNEGATO IN RESINA CORE EMBEDDED IN RESIN VERSION TROPICALIZZAZIONE TROPICALIZATION		

TBN60F

TRASFORMATORI DI MISURA / MEASURING TRANSFORMERS

Corrente primaria Primary Current	Classe Accuracy	Potenza Power	Corrente secondaria Secondary current	Corrente secondaria Secondary current
A		VA	5A	1A
500	0,5	7	10053500000	10053100000
600	0,5	10	10053500001	10053100001
750	0,5	10	10053500002	10053100002
800	0,5	10	10053500003	10053100003
1000	0,5	10	10053500004	10053100004
1200	0,5	15	10053500005	10053100005
1250	0,5	20	10053500006	10053100006
1500	0,5	20	10053500007	10053100007
1600	0,5	20	10053500008	10053100008
2000	0,5	25	10053500009	10053100009
2500	0,5	25	10053500010	10053100010
3000	0,5	25	10053500011	10053100011

TRASFORMATORI DI MISURA / MEASURING TRANSFORMERS

Corrente primaria Primary Current	Classe Accuracy	Potenza Power	Corrente secondaria Secondary current	Corrente secondaria Secondary current
A		VA	5A	1A
600	0,2	1	10053508001	10053108001
750	0,2	2	10053508002	10053108002
800	0,2	2	10053508003	10053108003
1000	0,2	4	10053508004	10053108004
1200	0,2	6	10053508005	10053108005
1250	0,2	6	10053508006	10053108006
1500	0,2	10	10053508007	10053108007
1600	0,2	10	10053508008	10053108008
2000	0,2	15	10053508009	10053108009

TRASFORMATORI DI PROTEZIONE / PROTECTION TRANSFORMERS

Corrente primaria Primary Current	Classe Accuracy	Potenza Power	Corrente secondaria Secondary current	Corrente secondaria Secondary current
A		VA	5A	1A
150	5P10	2,5	10053510001	10053110001
150	5P15	1	10053510002	10053110002
150	5P20	0,5	10053510003	10053110003
200	5P10	3	10053510004	10053110004
200	5P15	1,5	10053510005	10053110005
200	5P20	0,5	10053510006	10053110006
300	5P10	6	10053510007	10053110007
300	5P15	2	10053510008	10053110008
300	5P20	1	10053510009	10053110009
400	5P10	8	10053510010	10053110010
400	5P15	3	10053510011	10053110011
400	5P20	1	10053510012	10053110012
500	5P10	10	10053510013	10053110013
500	5P15	4	10053510014	10053110014
500	5P20	1,5	10053510015	10053110015
600	5P10	12	10053510016	10053110016
600	5P15	5	10053510017	10053110017
600	5P20	2	10053510018	10053110018
800	5P10	12	10053510019	10053110019
800	5P15	6	10053510020	10053110020
800	5P20	2	10053510021	10053110021
1000	5P10	15	10053510022	10053110022
1000	5P15	8	10053510023	10053110023
1000	5P20	2	10053510024	10053110024
1200	5P10	20	10053510025	10053110025
1200	5P15	8	10053510026	10053110026
1200	5P20	2,5	10053510027	10053110027
1250	5P10	20	10053510028	10053110028
1250	5P15	8	10053510029	10053110029
1250	5P20	2,5	10053510030	10053110030
1500	5P10	20	10053510031	10053110031
1500	5P15	10	10053510032	10053110032
1500	5P20	3	10053510033	10053110033
1600	5P10	20	10053510034	10053110034
1600	5P15	10	10053510035	10053110035
1600	5P20	3	10053510036	10053110036
2000	5P10	15	10053510037	10053110037
2000	5P15	7	10053510038	10053110038
2000	5P20	2,5	10053510039	10053110039
2500	5P10	15	10053510040	10053110040
2500	5P15	6	10053510041	10053110041
2500	5P20	1	10053510042	10053110042
3000	5P10	20	10053510043	10053110043
3000	5P15	6	10053510044	10053110044
3000	5P20	1	10053510045	10053110045