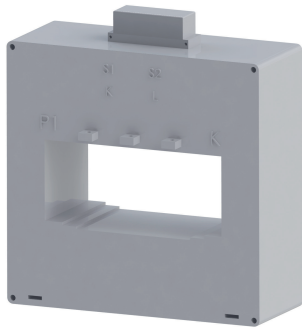
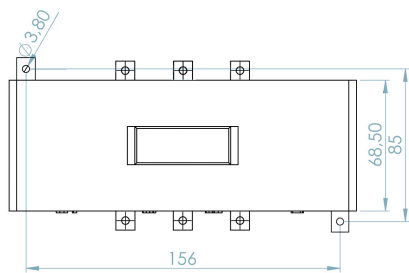
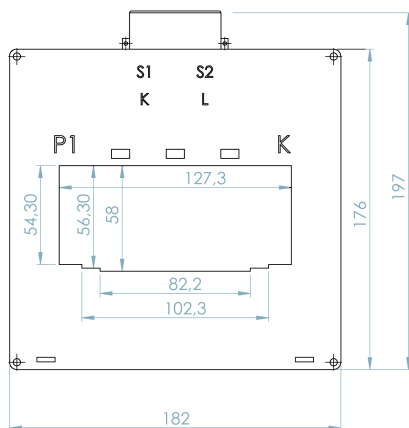


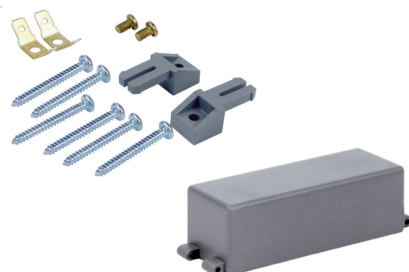
TBR120



DIMENSIONI / DIMENSIONS



ACCESSORI INCLUSI / SUPPLIED ACCESSORY



CARATTERISTICHE GENERALI / GENERAL CHARACTERISTICS		TBR120
TIPO / TYPE		TRASFORMATORE A SECCO CON ISOLAMENTO IN ARIA DRY TRANSFORMER WITH AIR INSULATION
NORME DI RIFERIMENTO / STANDARDS REFERENCE		EN/IEC 61869-1, 61869-2
FREQUENZA DI FUNZIONAMENTO / OPERATING FREQUENCY		50...60Hz (400Hz SU RICHIESTA / ON REQUEST)
CORRENTE TERMICA NOMINALE PERMANENTE (Icth) RATED CONTINUOUS THERMAL CURRENT (Icth)		100%Ipr
CORRENTE TERMICA NOMINALE DI CORTOCIRCUITO (Ith) RATED THERMAL SHORT CIRCUIT (Ith)		100kA
CORRENTE DINAMICA NOMINALE (Idyn) RATED DYNAMIC CURRENT (Idyn)		250kA
FATTORE DI SICUREZZA (FS) / SAFETY FACTOR (FS)		≤ 10
TENSIONE MASSIMA DI ESERCIZIO (Um) MAXIMUM OPERATING VOLTAGE (Um)		0,72KV (1,2 KV A RICHIESTA / ON REQUEST)
TENSIONE DI PROVA / TEST VOLTAGE		3KV (6 KV A RICHIESTA / ON REQUEST)
MASSIMA POTENZA DISSIPATA MAXIMUM POWER DISSIPATION (RANGE VALUE)		≤ 24,5W
TEMPERATURA MASSIMA AMMISSIBILE SU CAVO O BARRA MAXIMUM ALLOWABLE TEMPERATURE ON F THE CABLE OR BAR		120°C
ISOLAMENTO / INSULATION		B
TEMPERATURA DI UTILIZZO / OPERATING TEMPERATURE		-25°C ...+50°C
TEMPERATURA DI STOCCAGGIO / STORAGE TEMPERATURE		-40°C ...+90°C
UMIDITÀ RELATIVA / RELATIVE HUMIDITY		≤ 85%
CUSTODIA IN MATERIALE TERMOPLASTICO AUTOESTINGUENTE SELF ESTINGUISHING THERMOPLASTIC MATERIAL		UL94-V0
PESO / WEIGHT		≤ 3 Kg
GRADO DI PROTEZIONE / PROTECTION DEGREE		IP40 CUSTODIA / HOUSING IP20 TERMINALI / TERMINALS
TERMINALI SECONDARI / SECONDARY TERMINALS		4mm ²
TIPO DI FISSAGGIO FIXING TYPE	GUIDA DIN 35mm / DIN RAIL 35mm	<input type="checkbox"/>
	A VITE PER PANNELLO / SCREWS TYPE FOR PANEL	<input checked="" type="checkbox"/>
	VITE SU SBARRA / FIXING ON BAR WITH SCREW	<input checked="" type="checkbox"/>
SU RICHIESTA ON REQUEST		VERSIONE CON NUCLEO ANNEGATO IN RESINA CORE EMBEDDED IN RESIN VERSION TROPICALIZZAZIONE TROPICALIZATION

TRASFORMATORI DI PROTEZIONE / PROTECTION TRANSFORMERS

Corrente primaria Primary Current	Classe Accuratezza Accuracy	Potenza Power	Corrente secondaria Secondary current	Corrente secondaria Secondary current
A	VA	5A	1A	
400	5P5	10	10016510000	10016110000
400	5P10	4.5	10016510001	10016110001
400	5P15	2.5	10016510002	10016110002
400	5P20	1	10016510003	10016110003
500	5P5	15	10016510004	10016110004
500	5P10	6	10016510005	10016110005
500	5P15	3	10016510006	10016110006
500	5P20	2	10016510007	10016110007
600	5P5	16	10016510008	10016110008
600	5P10	7	10016510009	10016110009
600	5P15	4	10016510010	10016110010
600	5P20	2	10016510011	10016110011
750	5P5	20	10016510012	10016110012
750	5P10	8	10016510013	10016110013
750	5P15	4	10016510014	10016110014
750	5P20	2	10016510015	10016110015
800	5P5	20	10016510016	10016110016
800	5P10	8	10016510017	10016110017
800	5P15	6	10016510018	10016110018
800	5P20	3	10016510019	10016110019
1000	5P5	20	10016510020	10016110020
1000	5P10	12	10016510021	10016110021
1000	5P15	6	10016510022	10016110022
1000	5P20	2	10016510023	10016110023
1200	5P5	30	10016510024	10016110024
1200	5P10	15	10016510025	10016110025
1200	5P15	8	10016510026	10016110026
1200	5P20	4	10016510027	10016110027
1250	5P5	30	10016510028	10016110028
1250	5P10	15	10016510029	10016110029
1250	5P15	8	10016510030	10016110030
1250	5P20	4	10016510031	10016110031
1500	5P5	40	10016510032	10016110032
1500	5P10	18	10016510033	10016110033
1500	5P15	10	10016510034	10016110034
1500	5P20	5	10016510035	10016110035
1600	5P5	40	10016510036	10016110036
1600	5P10	18	10016510037	10016110037
1600	5P15	10	10016510038	10016110038
1600	5P20	5	10016510039	10016110039
2000	5P5	50	10016510040	10016110040
2000	5P10	25	10016510041	10016110041
2000	5P15	12	10016510042	10016110042
2000	5P20	6	10016510043	10016110043
2500	5P5	75	10016510044	10016110044
2500	5P10	30	10016510045	10016110045
2500	5P15	15	10016510046	10016110046
2500	5P20	8	10016510047	10016110047
3000	5P5	40	10016510048	10016110048
3000	5P10	20	10016510049	10016110049
3000	5P15	15	10016510050	10016110050
3000	5P20	10	10016510051	10016110051
4000	5P10	25	10016510053	10016110053
4000	5P15	15	10016510054	10016110054
4000	5P20	12	10016510055	10016110055

SCHEMA DI COLLEGAMENTO / WIRING DIAGRAM

