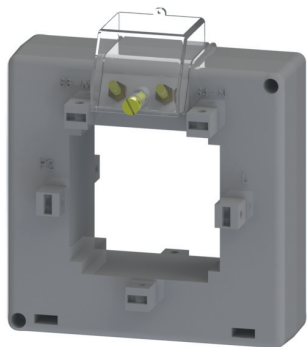
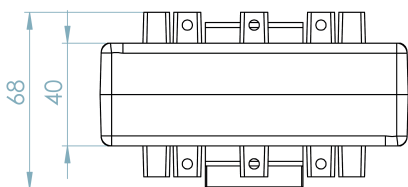
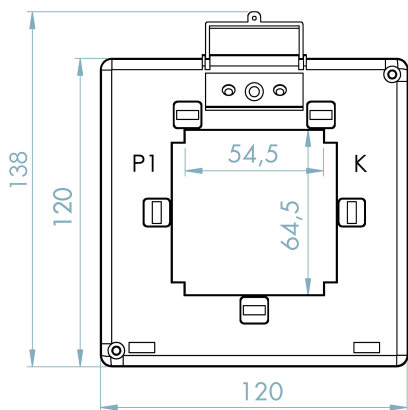


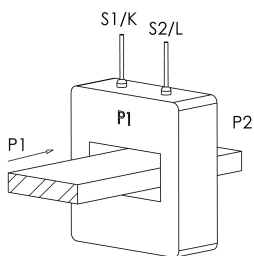
**TBX60**



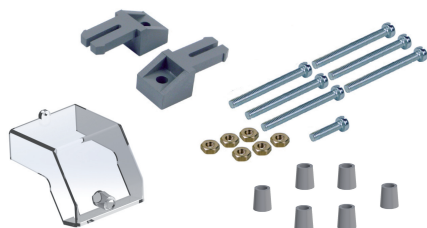
**DIMENSIONI / DIMENSIONS**



**SCHEMA DI COLLEGAMENTO / WIRING DIAGRAM**



**ACCESSORI INCLUSI / SUPPLIED ACCESSORY**



**ACCESSORIO OPZIONALE KIT UTF  
UTF KIT OPTIONAL ACCESSORY**



CODICE ART. / ART. CODE 0000003000

CARATTERISTICHE GENERALI / GENERAL CHARACTERISTICS		TBX60
TIPO / TYPE		TRASFORMATORE A SECCO CON ISOLAMENTO IN ARIA DRY TRANSFORMER WITH AIR INSULATION
NORME DI RIFERIMENTO / STANDARDS REFERENCE		EN/IEC 61869-1, 61869-2
FREQUENZA DI FUNZIONAMENTO / OPERATING FREQUENCY		50...60Hz (400Hz SU RICHIESTA / ON REQUEST)
CORRENTE TERMICA NOMINALE PERMANENTE (I <sub>cth</sub> ) RATED CONTINUOUS THERMAL CURRENT (I <sub>cth</sub> )		100%I <sub>pr</sub>
CORRENTE TERMICA NOMINALE DI CORTOCIRCUITO (I <sub>th</sub> ) RATED THERMAL SHORT CIRCUIT (I <sub>th</sub> )		100kA
CORRENTE DINAMICA NOMINALE (I <sub>dyn</sub> ) RATED DYNAMIC CURRENT (I <sub>dyn</sub> )		250kA
FATTORE DI SICUREZZA (FS) / SAFETY FACTOR (FS)		≤ 10
TENSIONE MASSIMA DI ESERCIZIO (U <sub>m</sub> ) MAXIMUM OPERATING VOLTAGE (U <sub>m</sub> )		0,72KV (1,2 KV A RICHIESTA / ON REQUEST)
TENSIONE DI PROVA / TEST VOLTAGE		3KV (6 KV A RICHIESTA / ON REQUEST)
MASSIMA POTENZA DISSIPATA MAXIMUM POWER DISSIPATION (RANGE VALUE)		≤ 16,5W
TEMPERATURA MASSIMA AMMISSIBILE SU CAVO O BARRA MAXIMUM ALLOWABLE TEMPERATURE ON F THE CABLE OR BAR		120°C
ISOLAMENTO / INSULATION		B
TEMPERATURA DI UTILIZZO / OPERATING TEMPERATURE		-25°C ...+50°C
TEMPERATURA DI STOCCAGGIO / STORAGE TEMPERATURE		-40°C ...+90°C
UMIDITÀ RELATIVA / RELATIVE HUMIDITY		≤ 85%
CUSTODIA IN MATERIALE TERMOPLASTICO AUTOESTINGUENTE SELF EXTINGUISHING THERMOPLASTIC MATERIAL		UL94-V0
PESO / WEIGHT		≤ 1 Kg
GRADO DI PROTEZIONE / PROTECTION DEGREE		IP40 CUSTODIA / HOUSING IP20 TERMINALI / TERMINALS
TERMINALI SECONDARI / SECONDARY TERMINALS		4mm <sup>2</sup>
TIPO DI FISSAGGIO FIXING TYPE	GUIDA DIN 35mm / DIN RAIL 35mm	<input type="checkbox"/>
	A VITE PER PANNELLO / SCREWS TYPE FOR PANEL	<input checked="" type="checkbox"/>
	VITE SU SBARRA / FIXING ON BAR WITH SCREW	<input checked="" type="checkbox"/>
SU RICHIESTA ON REQUEST		VERSIONE CON NUCLEO ANNEGATO IN RESINA CORE EMBEDDED IN RESIN VERSION TROPICALIZZAZIONE TROPICALIZATION

**TRASFORMATORI DI MISURA / MEASURING TRANSFORMERS**

Corrente primaria Primary Current	Classe Accuracy	Potenza Power	Corrente secondaria Secondary current	Corrente secondaria Secondary current
A		VA	5A	1A
250	1	3	10029500000	10029100000
300	0,5	2	10029500001	10029100001
400	0,5	4	10029500002	10029100002
500	0,5	8	10029500003	10029100003
600	0,5	10	10029500004	10029100004
750	0,5	10	10029500005	10029100005
800	0,5	10	10029500006	10029100006
1000	0,5	12	10029500007	10029100007
1200	0,5	14	10029500008	10029100008
1250	0,5	14	10029500017	10029100017
1500	0,5	15	10029500009	10029100009
1600	0,5	15	10029500015	10029100015
2000	0,5	20	10029500010	10029100010
2500	0,5	25	10029500011	10029100011

**TRASFORMATORI DI MISURA / MEASURING TRANSFORMERS**

Corrente primaria Primary Current	Classe Accuracy	Potenza Power	Corrente secondaria Secondary current	Corrente secondaria Secondary current
A		VA	5A	1A
600	0,2	1,5	10029508004	10029108004
750	0,2	2	10029508005	10029108005
800	0,2	2	10029508006	10029108006
1000	0,2	4	10029508007	10029108007
1200	0,2	6	10029508008	10029108008
1250	0,2	6	10029508014	10029108014
1500	0,2	10	10029508009	10029108009
1600	0,2	10	10029508015	10029108015
2000	0,2	15	10029508010	10029108010
2500	0,2	20	10029508011	10029108011

**TRASFORMATORI DI PROTEZIONE / PROTECTION TRANSFORMERS**

Corrente primaria Primary Current	Classe Accuracy	Potenza Power	Corrente secondaria Secondary current	Corrente secondaria Secondary current
A		VA	5A	1A
250	5P5	2,5	10029510000	10029110000
250	5P10	1	10029510001	10029110001
300	5P5	3	10029510002	10029110002
300	5P10	1	10029510003	10029110003
400	5P5	4,5	10029510004	10029110004
400	5P10	1,5	10029510005	10029110005
500	5P5	6	10029510006	10029110006
500	5P10	2	10029510007	10029110007
600	5P5	7	10029510008	10029110008
600	5P10	2,5	10029510009	10029110009
800	5P5	2,5	10029510010	10029110010
1000	5P5	3	10029510011	10029110011
1200	5P5	3,5	10029510012	10029110012
1500	5P5	4,5	10029510013	10029110013
2000	5P5	2	10029510014	10029110014
2500	5P5	2,5	10029510015	10029110015