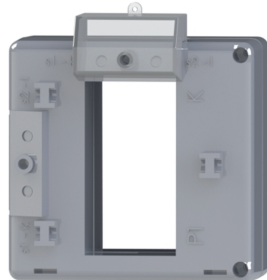


TBX60B



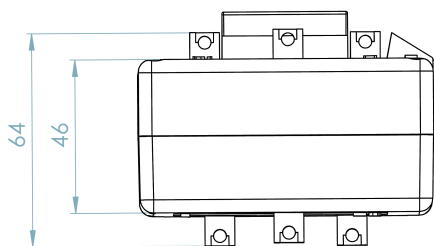
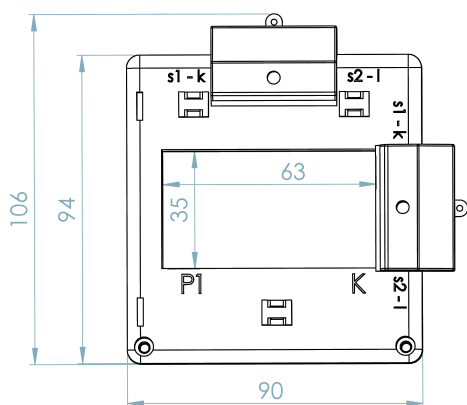
TBXV60B



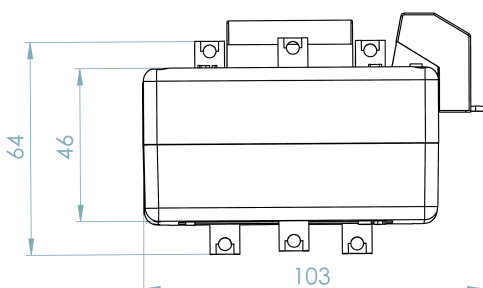
CARATTERISTICHE GENERALI / GENERAL CHARACTERISTICS		TBX60B	TBXV60B
TIPO / TYPE		TRASFORMATORE A SECCO CON ISOLAMENTO IN ARIA DRY TRANSFORMER WITH AIR INSULATION	
NORME DI RIFERIMENTO / STANDARDS REFERENCE		EN/IEC 61869-1, 61869-2	
FREQUENZA DI FUNZIONAMENTO / OPERATING FREQUENCY		50...60Hz (400Hz SU RICHIESTA / ON REQUEST)	
CORRENTE TERMICA NOMINALE PERMANENTE (Icth) RATED CONTINUOUS THERMAL CURRENT (Icth)		100%Ipr	
CORRENTE TERMICA NOMINALE DI CORTOCIRCUITO (Ith) RATED THERMAL SHORT CIRCUIT (Ith)		100kA	
CORRENTE DINAMICA NOMINALE (Idyn) RATED DYNAMIC CURRENT (Idyn)		250kA	
FATTORE DI SICUREZZA (FS) / SAFETY FACTOR (FS)		≤ 10	
TENSIONE MASSIMA DI ESERCIZIO (Um) MAXIMUM OPERATING VOLTAGE (Um)		0,72kV (1,2 kV A RICHIESTA / ON REQUEST)	
TENSIONE DI PROVA / TEST VOLTAGE		3kV (6 kV A RICHIESTA / ON REQUEST)	
MASSIMA POTENZA DISSIPATA MAXIMUM POWER DISSIPATION (RANGE VALUE)		≤ 16W	≤ 16W
TEMPERATURA MASSIMA AMMISSIBILE SU CAVO O BARRA MAXIMUM ALLOWABLE TEMPERATURE ON F THE CABLE OR BAR		120°C	
ISOLAMENTO / INSULATION		B	
TEMPERATURA DI UTILIZZO / OPERATING TEMPERATURE		-25°C ...+50°C	
TEMPERATURA DI STOCCAGGIO / STORAGE TEMPERATURE		-40°C ...+90°C	
UMIDITÀ RELATIVA / RELATIVE HUMIDITY		≤ 85%	
CUSTODIA IN MATERIALE TERMOPLASTICO AUTOESTINGUENTE SELF ESTINGUISHING THERMOPLASTIC MATERIAL		UL94-V0	
PESO / WEIGHT		≤ 2 Kg	≤ 2 Kg
GRADO DI PROTEZIONE / PROTECTION DEGREE		IP40 CUSTODIA / HOUSING IP20 TERMINALI / TERMINALS	
TERMINALI SECONDARI / SECONDARY TERMINALS		4mm ²	4mm ²
TIPO DI FISSAGGIO FIXING TYPE	GUIDA DIN 35mm / DIN RAIL 35mm	<input type="checkbox"/>	
	A VITE PER PANNELLO / SCREWS TYPE FOR PANEL	<input checked="" type="checkbox"/>	
	VITE SU SBARRA / FIXING ON BAR WITH SCREW	<input checked="" type="checkbox"/>	
SU RICHIESTA ON REQUEST		VERSIONE CON NUCLEO ANNEGATO IN RESINA CORE EMBEDDED IN RESIN VERSION TROPICALIZZAZIONE TROPICALIZATION	

DIMENSIONI / DIMENSIONS

TBX60B



TBXV60B



TBX60B

TRASFORMATORI DI MISURA / MEASURING TRANSFORMERS

Corrente primaria Primary Current	Classe Accuracy	Potenza Power	Corrente secondaria Secondary current	Corrente secondaria Secondary current
A		VA	5A	1A
500	0,5	5	10045500000	10045100000
600	0,5	7	10045500001	10045100001
750	0,5	10	10045500002	10045100002
800	0,5	10	10045500003	10045100003
1000	0,5	12	10045500004	10045100004
1200	0,5	15	10045500005	10045100005
1250	0,5	15	10045500006	10045100006
1500	0,5	20	10045500007	10045100007
1600	0,5	25	10045500008	10045100008
2000	0,5	25	10045500009	10045100009

TBXV60B

TRASFORMATORI DI MISURA / MEASURING TRANSFORMERS

Corrente primaria Primary Current	Classe Accuracy	Potenza Power	Corrente secondaria Secondary current	Corrente secondaria Secondary current
A		VA	5A	1A
500	0,5	5	10046500000	10046100000
600	0,5	7	10046500001	10046100001
750	0,5	10	10046500002	10046100002
800	0,5	10	10046500003	10046100003
1000	0,5	12	10046500004	10046100004
1200	0,5	15	10046500005	10046100005
1250	0,5	15	10046500006	10046100006
1500	0,5	20	10046500007	10046100007
1600	0,5	25	10046500008	10046100008
2000	0,5	25	10046500009	10046100009

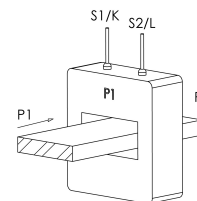
TRASFORMATORI DI MISURA / MEASURING TRANSFORMERS

Corrente primaria Primary Current	Classe Accuracy	Potenza Power	Corrente secondaria Secondary current	Corrente secondaria Secondary current
A		VA	5A	1A
500	0,2	2,5	10045508000	10045108000
600	0,2	3	10045508001	10045108001
750	0,2	6	10045508002	10045108002
800	0,2	6	10045508003	10045108003
1000	0,2	10	10045508004	10045108004
1200	0,2	15	10045508005	10045108005
1250	0,2	15	10045508006	10045108006
1500	0,2	20	10045508007	10045108007
1600	0,2	25	10045508008	10045108008
2000	0,2	25	10045508009	10045108009

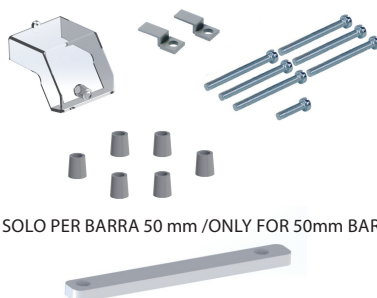
TRASFORMATORI DI MISURA / MEASURING TRANSFORMERS

Corrente primaria Primary Current	Classe Accuracy	Potenza Power	Corrente secondaria Secondary current	Corrente secondaria Secondary current
A		VA	5A	1A
500	0,2	2,5	10046508000	10046108000
600	0,2	3	10046508001	10046108001
750	0,2	6	10046508002	10046108002
800	0,2	6	10046508003	10046108003
1000	0,2	10	10046508004	10046108004
1200	0,2	15	10046508005	10046108005
1250	0,2	15	10046508006	10046108006
1500	0,2	20	10046508007	10046108007
1600	0,2	25	10046508008	10046108008
2000	0,2	25	10046508009	10046108009

SCHEMA DI COLLEGAMENTO / WIRING DIAGRAM



ACCESSORI INCLUSI / SUPPLIED ACCESSORY



SOLO PER BARRA 50 mm / ONLY FOR 50mm BAR

**ACCESSORIO OPZIONALE KIT UTF
UTF KIT OPTIONAL ACCESSORY**



CODICE ART. / ART. CODE 00000003000