

TV2



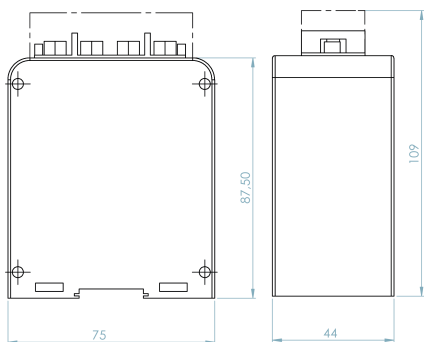
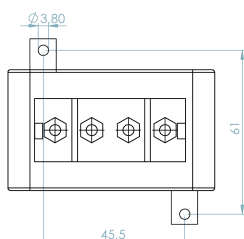
TV6



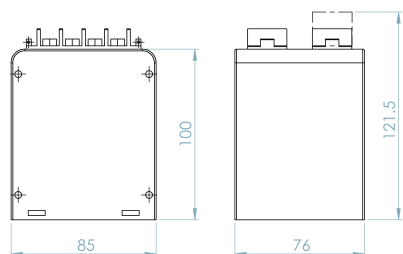
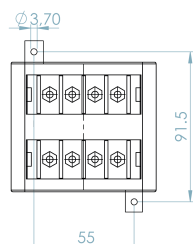
CARATTERISTICHE GENERALI / GENERAL CHARACTERISTICS		TV2	TV6
TIPO / TYPE		TRASFORMATORE A SECCO CON ISOLAMENTO IN ARIA DRY TRANSFORMER WITH AIR INSULATION	
NORME DI RIFERIMENTO / STANDARDS REFERENCE		EN/IEC 61869-1, 61869-3	
FREQUENZA DI FUNZIONAMENTO / OPERATING FREQUENCY		50...60Hz (400Hz SU RICHIESTA / ON REQUEST)	
POTENZA TERMICA THERMAL POWER		6 VOLTE NOMINALE / TIMES RATED BURDEN	
FATTORE DI TENSIONE / RATED VOLTAGE FACTOR		1,2 CONTINUATIVO / CONTINUOUS	
TENSIONE MASSIMA DI ESERCIZIO (Um) MAXIMUM OPERATING VOLTAGE (Um)		0,72KV (1,2 KV A RICHIESTA / ON REQUEST)	
TENSIONE DI PROVA / TEST VOLTAGE		3KV (6 KV A RICHIESTA / ON REQUEST)	
MASSIMA POTENZA DISSIPATA MAXIMUM POWER DISSIPATION (RANGE VALUE)	FASE/FASE / PHASE/PHASE	<=18W 1,2 Vn	<=120W 1,2 Vn
	FASE/TERRA / PHASE/GROUND	<=14W 1,2 Vn	-
	FASE/TERRA / PHASE/GROUND	<=12W 1,9 Vn x 8h	-
ISOLAMENTO / INSULATION		E	
TEMPERATURA DI UTILIZZO / OPERATING TEMPERATURE		-5°C ...+50°C	
TEMPERATURA DI STOCCAGGIO / STORAGE TEMPERATURE		-40°C ...+90°C	
UMIDITÀ RELATIVA / RELATIVE HUMIDITY		≤ 85%	
CUSTODIA IN MATERIALE TERMOPLASTICO AUTOESTINGUENTE SELF EXTINGUISHING THERMOPLASTIC MATERIAL		UL94-V0	
PESO / WEIGHT		≤ 1,5 Kg	≤ 1,50 Kg
GRADO DI PROTEZIONE / PROTECTION DEGREE		IP40 CUSTODIA / HOUSING IP20 TERMINALI / TERMINALS	
TERMINALI SECONDARI / SECONDARY TERMINALS		≤ 4mm ²	≤ 4mm ²
TIPO DI FISSAGGIO FIXING TYPE	GUIDA DIN 35mm / DIN RAIL 35mm	<input checked="" type="checkbox"/>	<input type="checkbox"/>
	A VITE PER PANNELLO / SCREWS TYPE FOR PANEL	<input checked="" type="checkbox"/>	<input checked="" type="checkbox"/>
	VITE SU SBARRA / FIXING ON BAR WITH SCREW	<input type="checkbox"/>	<input type="checkbox"/>

DIMENSIONI / DIMENSIONS

TV2



TV6



TV2

TRASFORMATORI DI MISURA / MEASURING TRANSFORMERS

Tensione primaria Primary Voltage	Classe Accuracy	Potenza Power	Tensione secondaria Secondary Voltage	Tensione secondaria Secondary Voltage
V		VA	100V	110V
100	1	2	10033000000	10033100000
120	1	2	10033000001	10033100001
230	1	2	10033000002	10033100002
380	1	2	10033000003	10033100003
400	1	2	10033000004	10033100004
500	1	2	10033000005	10033100005
600	1	2	10033000006	10033100006

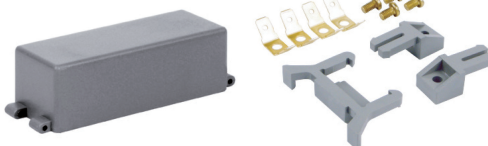
TV6

TRASFORMATORI DI MISURA / MEASURING TRANSFORMERS

Tensione primaria Primary Voltage	Classe Accuracy	Potenza Power	Tensione secondaria Secondary Voltage	Tensione secondaria Secondary Voltage
V		VA	100V	110V
100	0,5-3P	6	10034000000	10034100000
120	0,5-3P	6	10034000001	10034100001
230	0,5-3P	6	10034000002	10034100002
380	0,5-3P	6	10034000003	10034100003
400	0,5-3P	6	10034000004	10034100004
415	0,5-3P	6	10034000010	10034100010
440	0,5-3P	6	10034000011	10034100011
500	0,5-3P	6	10034000005	10034100005
600	0,5-3P	6	10034000006	10034100006
690	0,5-3P	6	10034000007	10034100007
800	0,5-3P	6	10034000008	10034100008

ACCESSORI INCLUSI / SUPPLIED ACCESSORY

TV2



TV6

