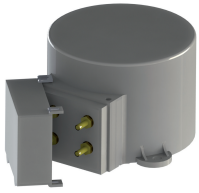
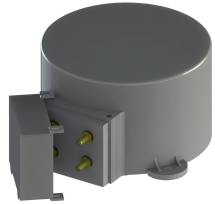


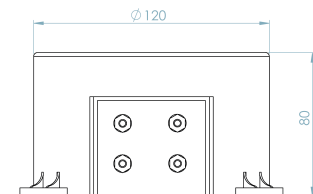
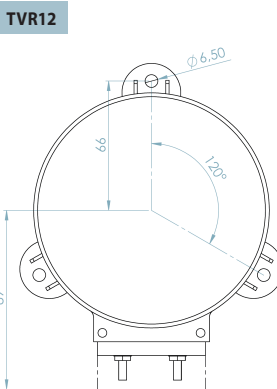
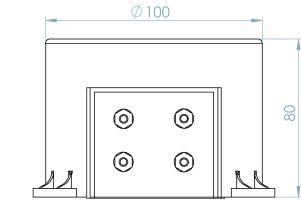
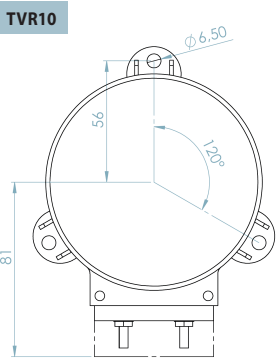
TVR10



TVR12



DIMENSIONI / DIMENSIONS



CARATTERISTICHE GENERALI / GENERAL CHARACTERISTICS		TVR10	TVR12
TIPO / TYPE		TRASFORMATORE A SECCO CON ISOLAMENTO IN ARIA DRY TRANSFORMER WITH AIR INSULATION	
NORME DI RIFERIMENTO / STANDARDS REFERENCE		EN/IEC 61869-1, 61869-3	
FREQUENZA DI FUNZIONAMENTO / OPERATING FREQUENCY		50...60Hz (400Hz SU RICHIESTA / ON REQUEST)	
POTENZA TERMICA THERMAL POWER		6 VOLTE NOMINALE / TIMES RATED BURDEN	
FATTORE DI TENSIONE / RATED VOLTAGE FACTOR		1,2 CONTINUATIVO / CONTINUOUS	
TENSIONE MASSIMA DI ESERCIZIO (Um) MAXIMUM OPERATING VOLTAGE (Um)		0,72KV (1,2 KV A RICHIESTA / ON REQUEST)	
TENSIONE DI PROVA / TEST VOLTAGE		3KV (6 KV A RICHIESTA / ON REQUEST)	
MASSIMA POTENZA DISSIPATA MAXIMUM POWER DISSIPATION (RANGE VALUE)	FASE/FASE / PHASE/PHASE	<=150W 1,2 Vn	<=160W 1,2 Vn
	FASE/TERRA / PHASE/GROUND	<=100W 1,2 Vn	<=110W 1,2 Vn
ISOLAMENTO / INSULATION	FASE/TERRA / PHASE/GROUND	<=70W 1,9 Vn x 8h	<=75W 1,9 Vn x 8h
TEMPERATURA DI UTILIZZO / OPERATING TEMPERATURE		E	
TEMPERATURA DI STOCCAGGIO / STORAGE TEMPERATURE		-5°C ...+50°C	
UMIDITÀ RELATIVA / RELATIVE HUMIDITY		-40°C ...+90°C	
CUSTODIA IN MATERIALE TERMOPLASTICO AUTOESTINGUENTE SELF ESTINGUISHING THERMOPLASTIC MATERIAL		≤ 85%	
PESO / WEIGHT		≤ 2,5 Kg	≤ 2,50 Kg
GRADO DI PROTEZIONE / PROTECTION DEGREE		UL94-V0	
TERMINALI SECONDARI / SECONDARY TERMINALS		IP40 CUSTODIA / HOUSING IP20 TERMINALI / TERMINALS	
TIPO DI FISSAGGIO FIXING TYPE	GUIDA DIN 35mm / DIN RAIL 35mm		<input type="checkbox"/>
	A VITE PER PANNELLO / SCREWS TYPE FOR PANEL		<input checked="" type="checkbox"/>
	VITE SU SBARRA / FIXING ON BAR WITH SCREW		<input type="checkbox"/>

TVR10

TRASFORMATORI DI MISURA / MEASURING TRANSFORMERS

Tensione primaria Primary Voltage	Classe Accuracy	Potenza Power	Tensione secondaria Secondary Voltage	Tensione secondaria Secondary Voltage
V		VA	100V	110V
100	0,5-3P	6	10035000000	10035100000
100	0,5-3P	10	10035000001	10035100001
120	0,5-3P	6	10035000002	10035100002
120	0,5-3P	10	10035000003	10035100003
230	0,5-3P	6	10035000004	10035100004
230	0,5-3P	10	10035000005	10035100005
380	0,5-3P	6	10035000006	10035100006
380	0,5-3P	10	10035000007	10035100007
400	0,5-3P	6	10035000008	10035100008
400	0,5-3P	10	10035000009	10035100009
415	0,5-3P	6	10035000018	10035100018
415	0,5-3P	10	10035000019	10035100019
440	0,5-3P	6	10035000020	10035100020
440	0,5-3P	10	10035000021	10035100021
500	0,5-3P	6	10035000010	10035100010
500	0,5-3P	10	10035000011	10035100011
600	0,5-3P	6	10035000012	10035100012
600	0,5-3P	10	10035000013	10035100013
690	0,5-3P	6	10035000014	10035100014
690	0,5-3P	10	10035000015	10035100015
800	0,5-3P	6	10035000016	10035100016
800	0,5-3P	10	10035000017	10035100017

TVR12

TRASFORMATORI DI MISURA / MEASURING TRANSFORMERS

Tensione primaria Primary Voltage	Classe Accuracy	Potenza Power	Tensione secondaria Secondary Voltage	Tensione secondaria Secondary Voltage
V		VA	100V	110V
100	0,5-3P	15	10036000000	10036100000
100	0,5-3P	20	10036000001	10036100001
120	0,5-3P	15	10036000002	10036100002
120	0,5-3P	20	10036000003	10036100003
230	0,5-3P	15	10036000004	10036100004
230	0,5-3P	20	10036000005	10036100005
380	0,5-3P	15	10036000006	10036100006
380	0,5-3P	20	10036000007	10036100007
400	0,5-3P	15	10036000008	10036100008
400	0,5-3P	20	10036000009	10036100009
415	0,5-3P	15	10036000019	10036100019
415	0,5-3P	20	10036000020	10036100020
440	0,5-3P	15	10036000018	10036100018
440	0,5-3P	20	10036000021	10036100021
500	0,5-3P	15	10036000010	10036100010
500	0,5-3P	20	10036000011	10036100011
600	0,5-3P	15	10036000012	10036100012
600	0,5-3P	20	10036000013	10036100013
690	0,5-3P	15	10036000014	10036100014
690	0,5-3P	20	10036000015	10036100015
800	0,5-3P	15	10036000016	10036100016
800	0,5-3P	20	10036000017	10036100017

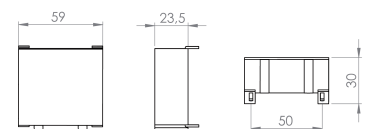
TRASFORMATORI DI MISURA / MEASURING TRANSFORMERS

Tensione primaria Primary Voltage	Classe Accuracy	Potenza Power	Tensione secondaria Secondary Voltage	Tensione secondaria Secondary Voltage
V		VA	100:√3	110:√3
100:√3	0,5-3P	6	10035010000	10035110000
100:√3	0,5-3P	10	10035010001	10035110001
120:√3	0,5-3P	6	10035010002	10035110002
120:√3	0,5-3P	10	10035010003	10035110003
230:√3	0,5-3P	6	10035010004	10035110004
230:√3	0,5-3P	10	10035010005	10035110005
380:√3	0,5-3P	6	10035010006	10035110006
380:√3	0,5-3P	10	10035010007	10035110007
400:√3	0,5-3P	6	10035010008	10035110008
400:√3	0,5-3P	10	10035010009	10035110009
415:√3	0,5-3P	6	10035010018	10035110018
415:√3	0,5-3P	10	10035010019	10035110019
440:√3	0,5-3P	6	10035010020	10035110020
440:√3	0,5-3P	10	10035010021	10035110021
500:√3	0,5-3P	6	10035010010	10035110010
500:√3	0,5-3P	10	10035010011	10035110011
600:√3	0,5-3P	6	10035010012	10035110012
600:√3	0,5-3P	10	10035010013	10035110013
690:√3	0,5-3P	6	10035010014	10035110014
690:√3	0,5-3P	10	10035010015	10035110015

TRASFORMATORI DI MISURA / MEASURING TRANSFORMERS

Tensione primaria Primary Voltage	Classe Accuracy	Potenza Power	Tensione secondaria Secondary Voltage	Tensione secondaria Secondary Voltage
V		VA	100V	110V
100:√3	0,5-3P	15	10036010000	10036110000
100:√3	0,5-3P	20	10036010001	10036110001
120:√3	0,5-3P	15	10036010002	10036110002
120:√3	0,5-3P	20	10036010003	10036110003
230:√3	0,5-3P	15	10036010004	10036110004
230:√3	0,5-3P	20	10036010005	10036110005
380:√3	0,5-3P	15	10036010006	10036110006
380:√3	0,5-3P	20	10036010007	10036110007
400:√3	0,5-3P	15	10036010008	10036110008
400:√3	0,5-3P	20	10036010009	10036110009
415:√3	0,5-3P	15	10036010019	10036110019
415:√3	0,5-3P	20	10036010020	10036110020
440:√3	0,5-3P	15	10036010021	10036110021
440:√3	0,5-3P	20	10036010022	10036110022
500:√3	0,5-3P	15	10036010010	10036110010
500:√3	0,5-3P	20	10036010011	10036110011
600:√3	0,5-3P	15	10036010012	10036110012
600:√3	0,5-3P	20	10036010013	10036110013
690:√3	0,5-3P	15	10036010014	10036110014
690:√3	0,5-3P	20	10036010015	10036110015
800:√3	0,5-3P	15	10036010016	10036110016
800:√3	0,5-3P	20	10036010017	10036110017

COPRIMORSETTO / TERMINAL COVER



ACCESSORI INCLUSI / SUPPLIED ACCESSORY

